

EXPERT SYSTEMS ON ENVIRONMENTAL DECENTRALIZED LICENSING IN BRAZIL



Sergio Glasmeyer

Alysson Diogenes

UNIVERSIDADE POSITIVO – CURITIBA - BRAZIL

spgglasmeyer@gmail.com



BRASIL

BIOMA AMAZÔNIA

legal reserve = 80%

BIOMA CERRADO

legal reserve = 20% + 35%
(Amazonian region)

BIOMA CAATINGA

legal reserve = 20%

BIOMA PANTANAL

legal reserve = 20%

BIOMA MATA ATLÂNTICA

legal reserve = 20%

BIOMA PAMPA

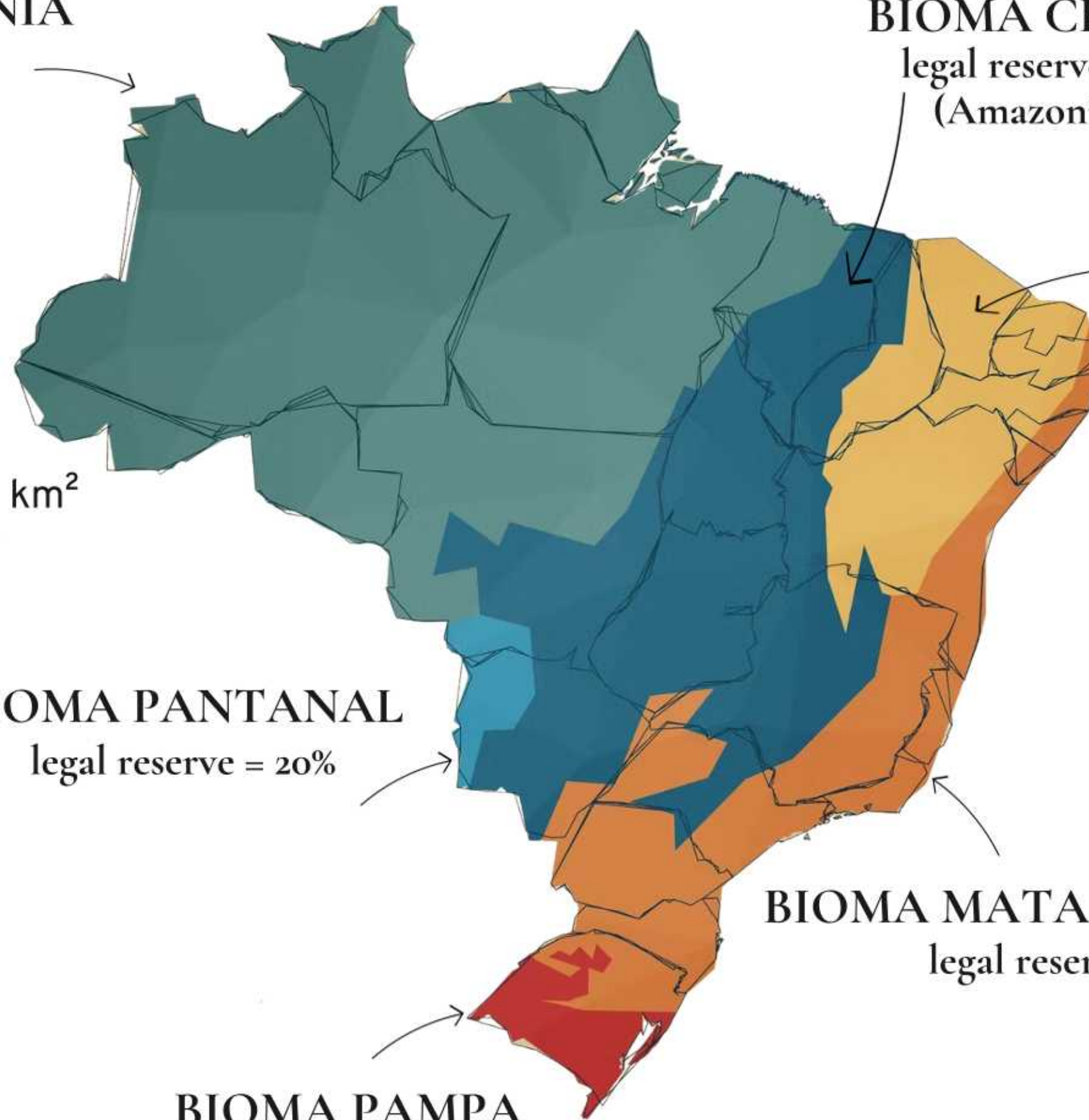
legal reserve = 20%

- TERRITORIAL EXTENSION: 8.514.876 km²
The fifth country with the largest territory

- FEDERATIVE UNIT:
26 states + 1 Federal District

- 5.570 MUNICIPALITIES

- 6 BIOMES



ENVIRONMENTAL LICENSING REGULATION IN BRAZIL

✓ 1981
National environmental policy
(PNMA)

✓ 1986
Environmental impact
assessment resolution

✓ 1997
Complementary procedures
for environmental licensing

✓ 1988
Federal Constitution
(Art 225)

✓ 2011
Complementary Law
140/2011 – decentralization

✓ Several rules
(Federal/ State/
Municipal levels)

LACK OF A FEDERAL LAW RELATED TO ENVIRONMENTAL LICENSING!

LICENSING PROCESS IN BRAZIL:

3 LEVELS OF COMPETENCE

- FEDERAL (IBAMA)
- STATES + FD (27 agencies)
- MUNICIPALITIES (up to 5.500 municipalities)

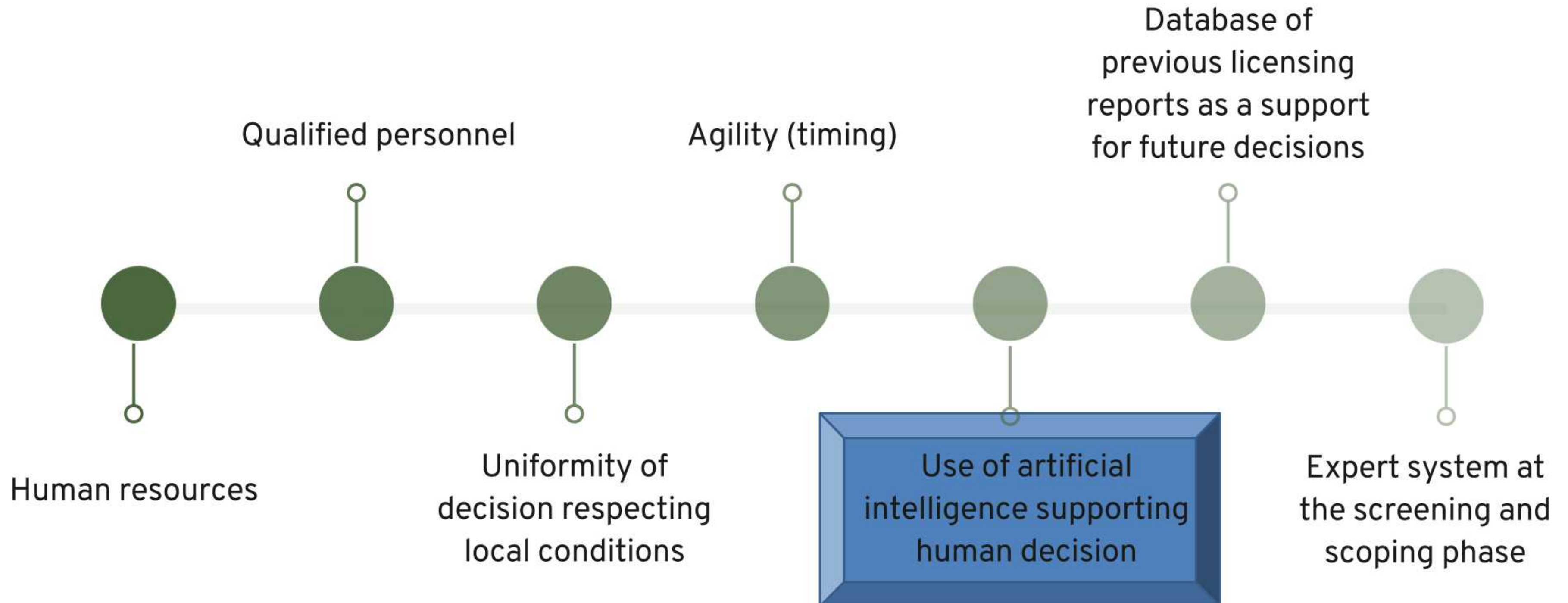
3-PHASE SYSTEM:

- PREVIOUS LICENSING
- INSTALLATION LICENSING
- OPERATIONAL LICENSING

(Each of those licenses have a defined validity period.)

- License exemption;
- Simplified licensing;
- Environmental licensing (LP, LI and LO);
- Authorization documents for forestry and forestry intervention;
- Permanent Preservation (APP);
- Intervention in water resources;

HOW TO DEAL IN SUCH A COMPLEX SITUATION?

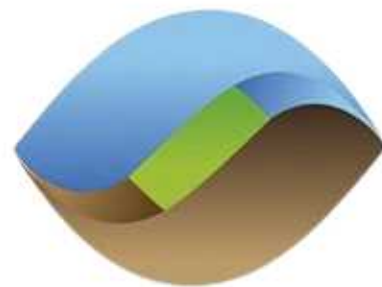


IAT AND DIGITAL PLATFORM SGA

INNOVATION AND DIGITAL TRANSFORMATION IN PARANÁ STATE



ENVIRONMENTAL INNOVATION AND DIGITAL TRANSFORMATION



**INSTITUTO
ÁGUA E TERRA**



THE WORLD BANK
IBRD • IDA | WORLD BANK GROUP

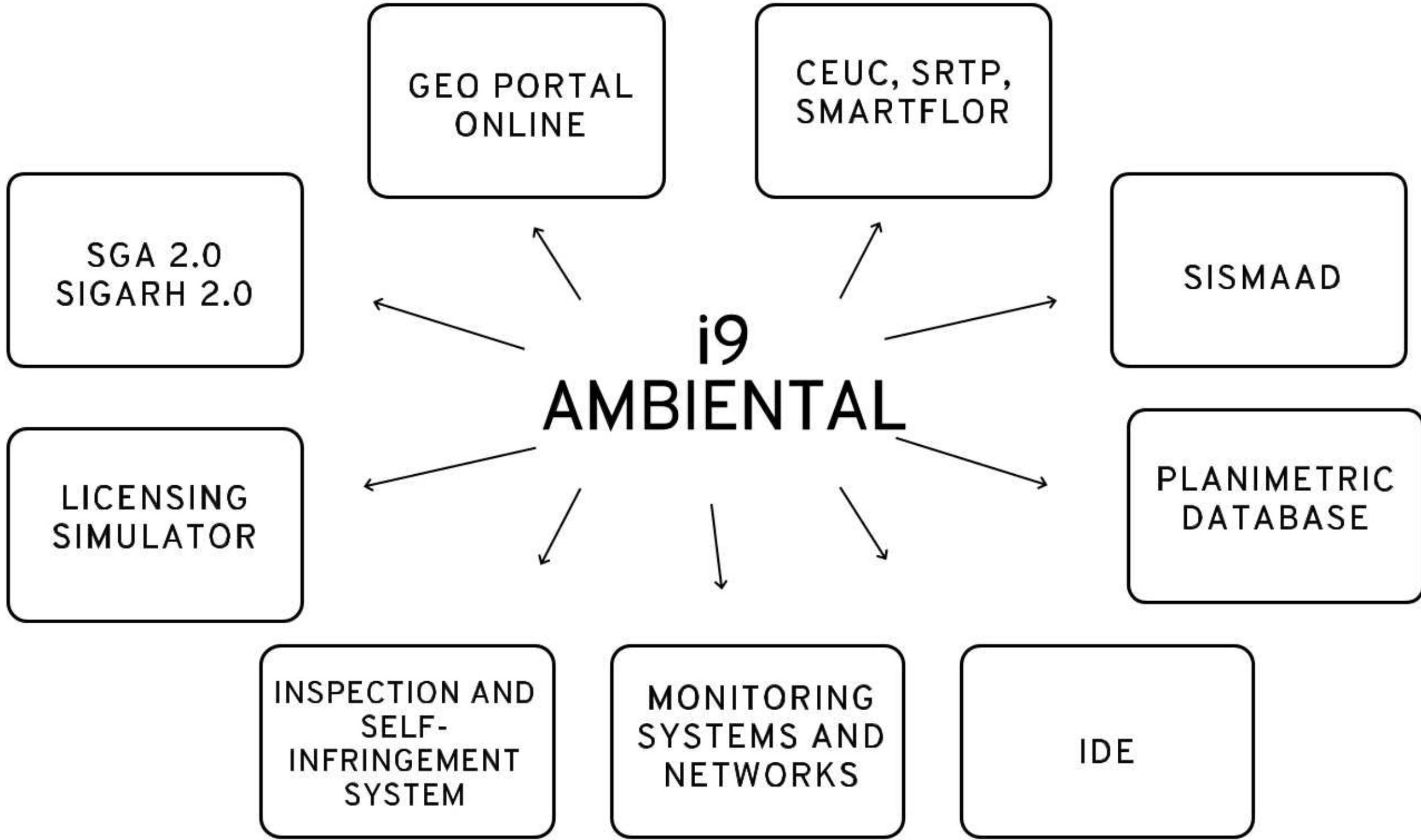
IAT AND DIGITAL PLATFORM SGA 2.0

AUTOMATION

EFFICIENCY

TRANSPARENCY

GEOTECHNOLOGIES



GEOGRAPHICAL INFORMATION SYSTEM MAPPING

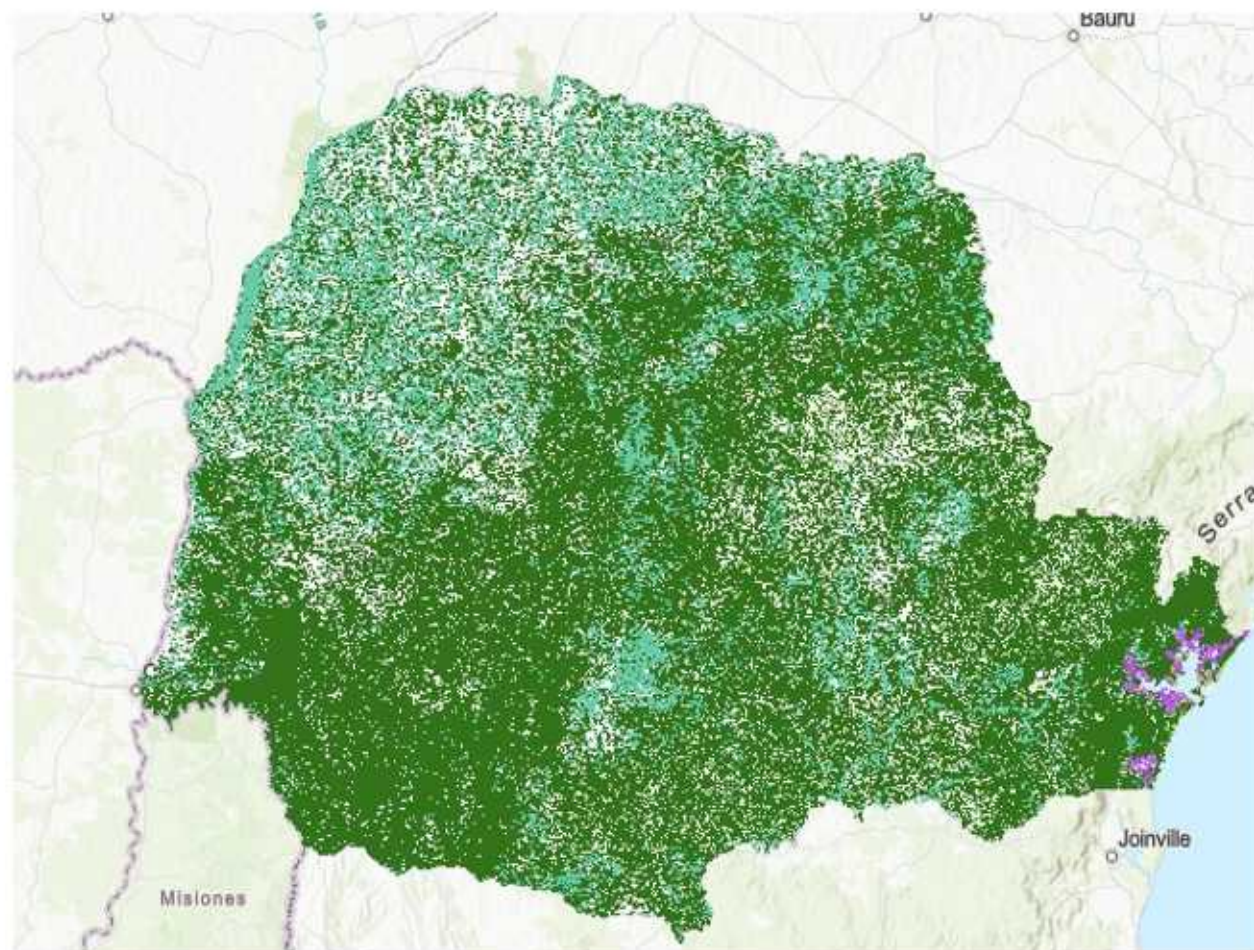
PARANÁ SPATIAL INFRASTRUCTURE MAPS

THEMES / LAYERS:

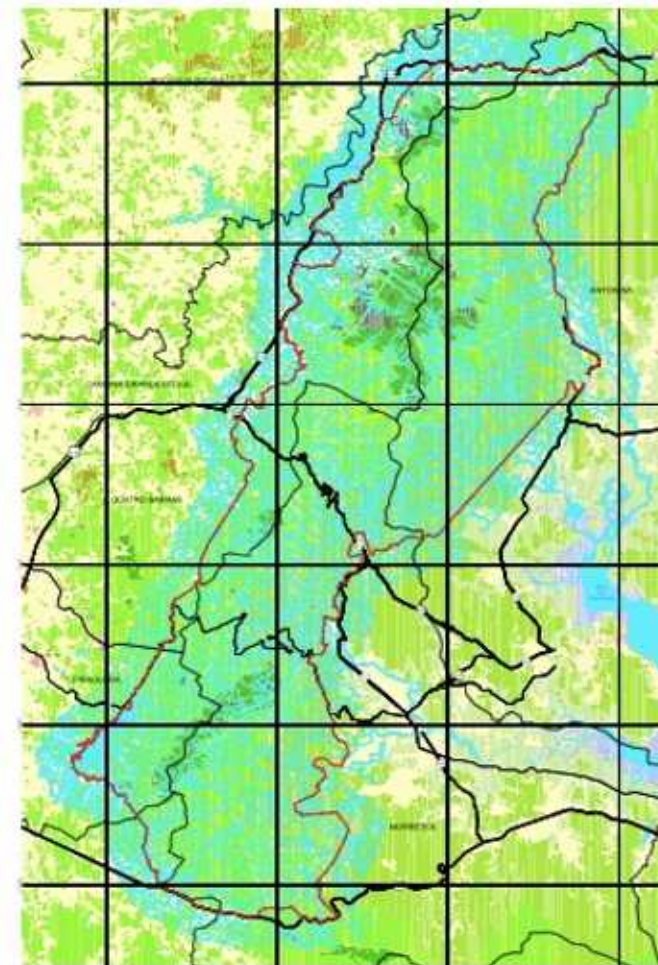
- PHYSICAL
- BIOTIC
- SOCIOECONOMIC
- ENVIRONMENTAL AND TERRITORIAL MANAGEMENT
 - INSTITUTIONAL LICENSING
 - POLITICAL LIMITS AND LOCATIONS
 - ENVIRONMENTAL MONITORING
 - WATERSHED PLANS
 - PROTECTION AND CONSERVATION
- TERRITORIES OF TRADITIONAL PEOPLE ZONING

GEOGRAPHICAL INFORMATION SYSTEM MAPPING

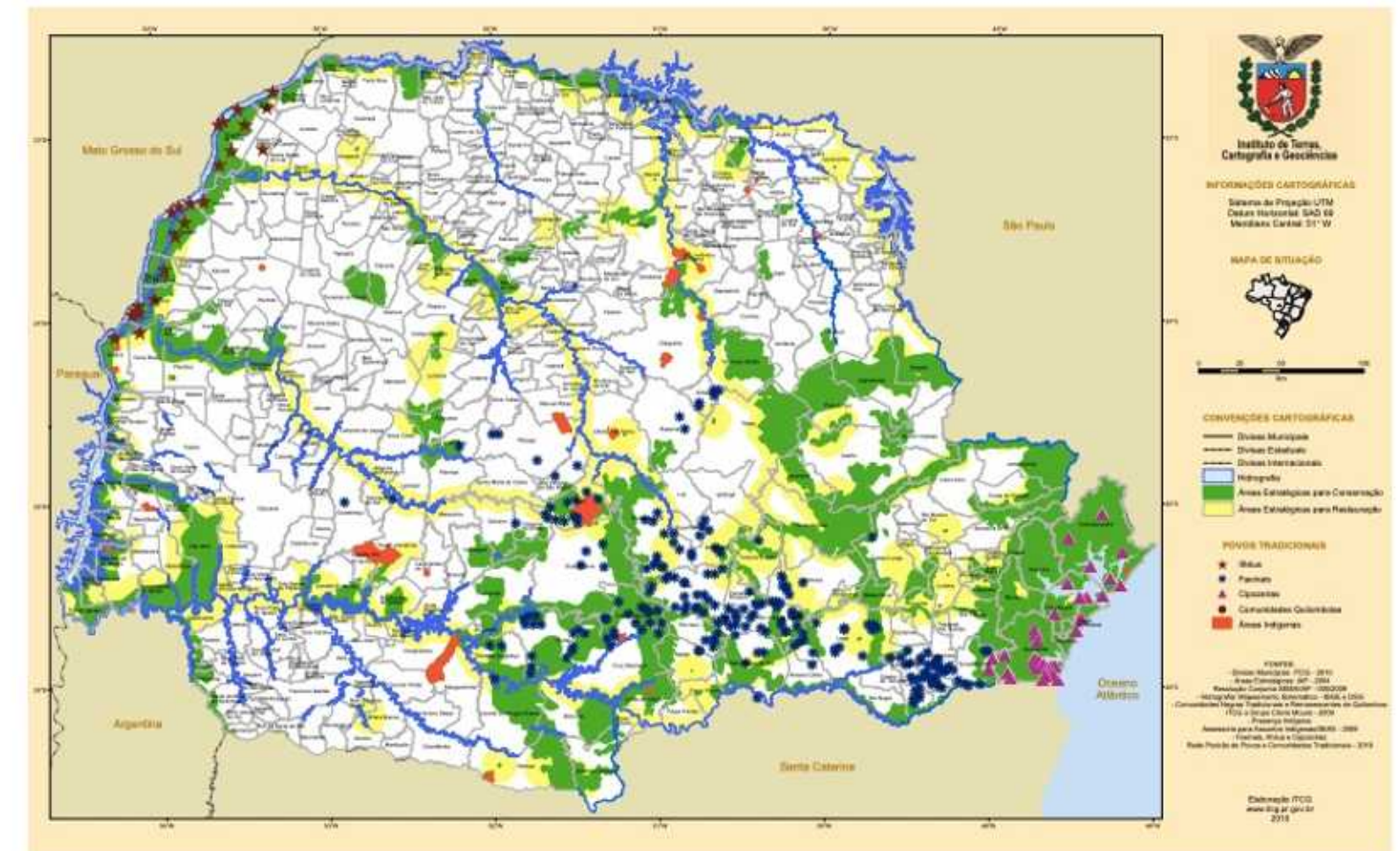
NATIVE VEGETATION



CONSERVATION UNITS



TERRITORIES OF TRADITIONAL PEOPLE ZONING





Let's continue the conversation!

Post questions and comments in the IAIA app.



Sergio Glasmeyer

Alysson Diogenes

UNIVERSIDADE POSITIVO – CURITIBA - BRAZIL

spgglasmeyer@gmail.com

[#iaia24](https://twitter.com/iaia24)

